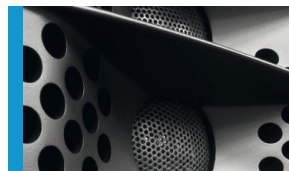




GL 16i + GL 16c

The GL 16 is a high-performance line array system for defined voice and music transmission at acoustically problematic venues and over long distances. Thanks to the acoustic interlinking of two consecutively arranged line arrays, required vertical sound bundling is also achieved within the upper audible frequency spectrum without loss in performance in the lower frequency range. This special construction effectuates an exceptionally homogeneous and symmetrical horizontal coverage, reducing the system width to a slim 19 cm. Due to their acoustic and mechanical properties, GL 16 systems are particularly suitable as an alternative to conventional speech line arrays and compact line arrays. Whether used as a single installation in churches, auditoriums and conference facilities, or as a metres-long array system in theatres and concert halls, the GL 16 is suitable for a multitude of various applications.



GL 16 with frontgrille available in all RAL-colors.



GL 16i dp on Monopod.



Integrated fittings for easy connection.

PRODUCT SPECIFICATIONS



GL 16i

	GL 16i dp 1000	GL 16i dp 1500	GL 16i a	GL 16i xov
	Digitally powered, 2 x 500 W	Digitally powered, 2 x 750 W	For use with GL 16 dp 1500 or separate Amplifier System	Passive Crossover
Speaker Components	4 x 6.5" neodym VC = 38 mm 16 x 1" neodym Tweeter	4 x 6.5" neodym VC = 38 mm 16 x 1" neodym Tweeter	4 x 6.5" neodym VC = 38mm 16 x 1" neodym Tweeter	4 x 6.5" neodym VC = 38mm 16 x 1" neodym Tweeter
Power Consumption	500 VA / 195-250 V	750 VA / 195-250 V	-	-
X-Over	2 way active	2 way active	2 way active	passive
Integrated Amplifier	2 x 500 W	2 x 750 W	-	-
Integrated DSP	32 bit RISC	32 bit RISC	-	-
Frequency Range	70 Hz - 20 kHz	70 Hz - 20 kHz	-	-
Connectors	XLR in / loop thru PowerCon in / loop thru	XLR in / loop thru PowerCon in / Speakon NL4 out	2 x Speakon NL4	2 x Speakon NL4
Speakon Coding:	-	1 +/- = Hi, 2 +/- = Low	1 +/- = Hi, 2 +/- = Low	1 +/- = Signal, 2 +/- = loop thru
Speakon Output	-	Max. 2 x GL 16 a	-	-
Coverage	100° / 7°	100° / 7°	100° / 7°	100° / 7°
Power	2 x 500 W EIA	2 x 750 W EIA	300 W / 300 W AES	450 W AES
Input Impedance	10 kΩ	10 kΩ	8 Ω / 8 Ω	8 Ω / 8 Ω
SPL max	> 130 dB	> 125 dB	> 127 dB	> 125 dB
Handles	2d handle on backside	2d handle on backside	2d handle on backside	2d handle on backside
Rigging	12 x M10 Integrated flying hardware	12 x M10 Integrated flying hardware	12 x M10 Integrated flying hardware	12 x M10 Integrated flying hardware
Weight	18 kg	18 kg	16 kg	17,5 kg
Size height x width x depth	70,8 x 19,0 x 24,5 cm	70,8 x 19,0 x 24,5 cm	70,8 x 19,0 x 24,5 cm	70,8 x 19,0 x 24,5 cm
Order No.	00500/2x500W	00500/2x750W	00500a	00500xov

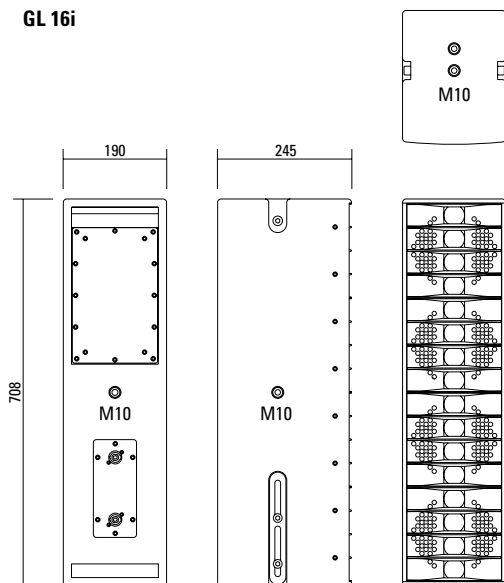


GL 16c

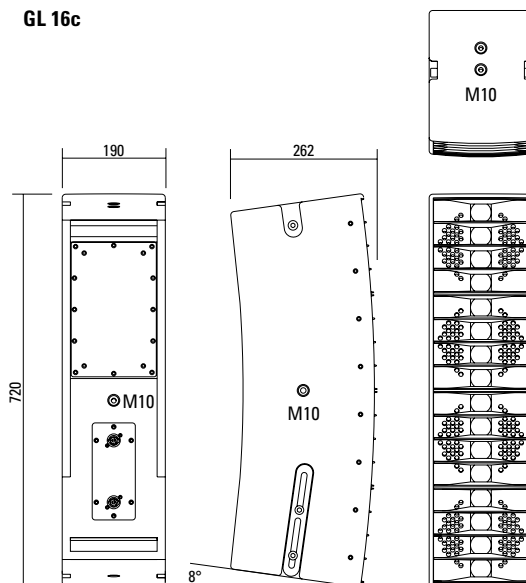
	GL 16c dp 1000	GL 16c dp 1500	GL 16c a	GL 16c xov
	Digitally powered, 2 x 500 W	Digitally powered, 2 x 750 W	For use with GL 16 dp 1500 or separate Amplifier System	Passive Crossover
Speaker Components	4 x 6.5" neodym VC = 38 mm 16 x 1" neodym Tweeter	4 x 6.5" neodym VC = 38 mm 16x 1" neodym Tweeter	4 x 6.5" neodym VC = 38 mm 16 x 1" neodym Tweeter	4 x 6.5" neodym VC = 38 mm 16 x 1" neodym Tweeter
Power Consumption	500 VA / 195-250 V	750 VA / 195-250 V	-	-
X-Over	2 way active	2 way active	2 way active	passive
Integrated Amplifier	2 x 500 W	2 x 750 W	-	-
Integrated DSP	32 bit RISC	32 bit RISC	-	-
Frequency Range	70 Hz - 20 kHz	70 Hz - 20 kHz	-	-
Connectors	XLR in / loop thru PowerCon in / loop thru	XLR in / loop thru PowerCon in / Speakon NL4 out	2 x Speakon NL4	2 x Speakon NL4
Speakon Coding:	-	1 +/- = Hi, 2 +/- = Low	1 +/- = Hi, 2 +/- = Low	1 +/- = Signal, 2 +/- = loop thru
Speakon Output	-	Max. 2 x GL 16 a	-	-
Coverage	100° / 30°	100° / 30°	100° / 30°	100° / 30°
Power	2 x 500 W EIA	2 x 750 W EIA	300 W / 300 W AES	450 W AES
Input Impedance	10 kΩ	10 kΩ	8 Ω / 8 Ω	8 Ω / 8 Ω
SPL max	> 130 dB	> 125 dB	> 127 dB	> 125 dB
Handles	2d handle on backside	2d handle on backside	2d handle on backside	2d handle on backside
Rigging	12 x M10 Integrated flying hardware	12 x M10 Integrated flying hardware	12 x M10 Integrated flying hardware	12 x M10 Integrated flying hardware
Weight	18 kg	18 kg	16 kg	17,5 kg
Size height x width x depth	72,0 x 19,0 x 26,2 (24,5) cm	72,0 x 19,0 x 26,2 (24,5) cm	72,0 x 19,0 x 26,2 (24,5) cm	72,0 x 19,0 x 26,2 (24,5) cm
Order No.	00501/2x500W	00501/2x750W	00501a	00501xov

DIMENSIONS

GL 16i

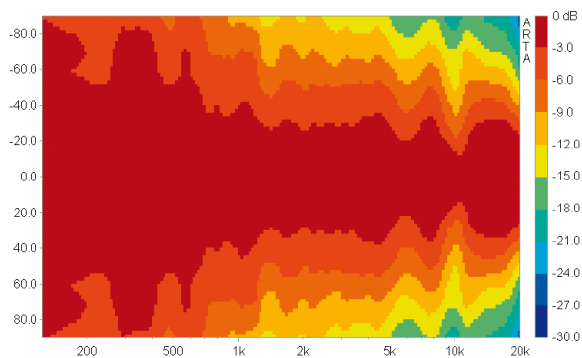


GL 16c

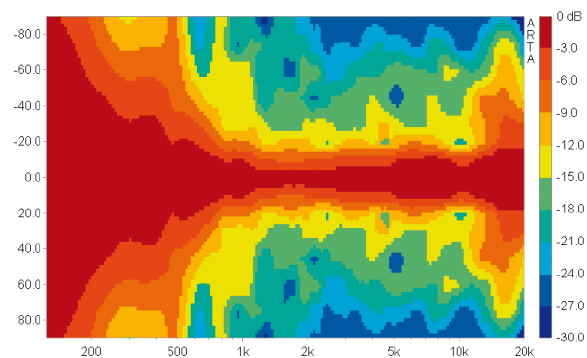


COVERAGE PATTERNS

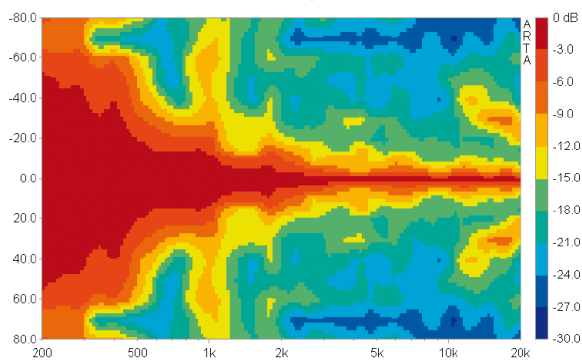
GL 16i / GL 16c - horizontal - 2D Directivity Plot



GL 16c - vertical - 2D Directivity Plot



GL 16i - vertical - 2D Directivity Plot



Controller Setups are available on our website:

<http://www.seeburg.net/downloads.php>



Design of two GL 16 systems.

Continuous internal steel frame
with integrated M10 threads

M10 thread
for assembly of the flying bracket

Fitting with elongated holes
for connection of the systems

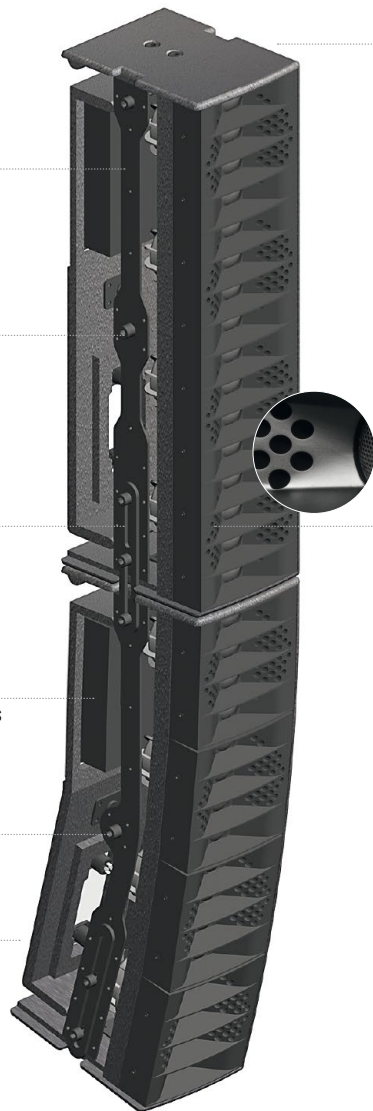
Integrated amplifier electronics
(dp-version). Cover panel at passive versions

M10 thread

Additional M10 thread
on the rear

M10 threads for connection
of the flying cradle or ring screws

AMR® - Channels



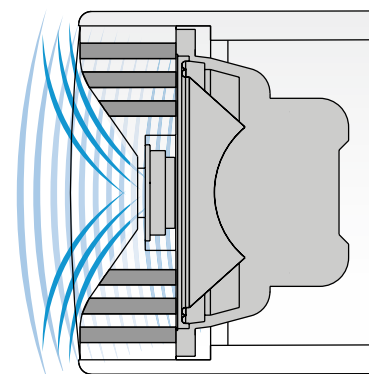
AMR® PRINCIPLE



AMR® Principle.*

The horn for the 1" driver (1" tweeter) contains integrated channels which pass through the sound waves of the low-mid speakers behind it. These channels are sealed in the frequency range of the HF driver due to the air mass inside the channels acting as a reflector (AMR = Air Mass Reflection).

The low-mid speakers operate on an acoustical band pass with a center frequency close to the crossover frequency, leading to a smooth horizontal dispersion over a wide frequency range. Another asset is the extremely compact construction of this design.



*patentrechtlich geschützt

APPLICATIONS



Flying Cradle.



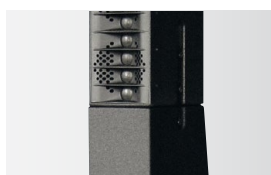
Flying Bracket.



GL 16i with frontgrille for unostentatious installation (custom version).



GL 16c -> GL Sub
GL 16c systems can be mounted by the use of the Connection Adapter.



GL 16i -> GL Sub
GL 16i systems can be mounted directly.



GL 16c -> G Sub 1501
Easy mounting by the use of the Connection Adapter.



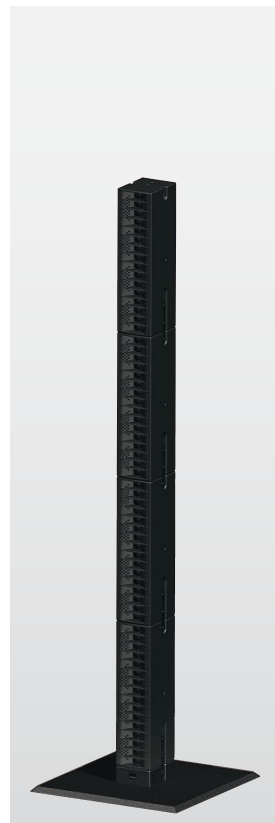
GL 16i auf Monopod



GL 16i / GL 16c / GL Sub



GL 16i / GL 24 / G Sub



Four GL 16i mounted on XL Base Plate by means of a Connection Adapter.

GL 16 systems are available not only as „i“ (straight) and „c“ (curved) versions, but also as selfpowered dp- versions (dp = digitally powered), featuring digital amplifier electronics with a DSP controller. Various factory-configured presets and volume settings can be selected.

High-grade electronic components from the industrial sector and a first-class circuit design ensure excellent audio quality with low distortion and effectively minimise static noise. Highly efficient and “intelligent” limiter systems ensure optimum protection against overload, without restricting the possibilities offered by this high-performance sound system.

XLR

Symmetrical analog input
Max. Input +21dBu
HF- and DC-filter.
Virtual ground lift

Level

Adjustment in 3 dB steps
(-6 dB to +3 dB)

Mute LED

Red light when the system is muted or under technically crucial conditions.

Limit LED

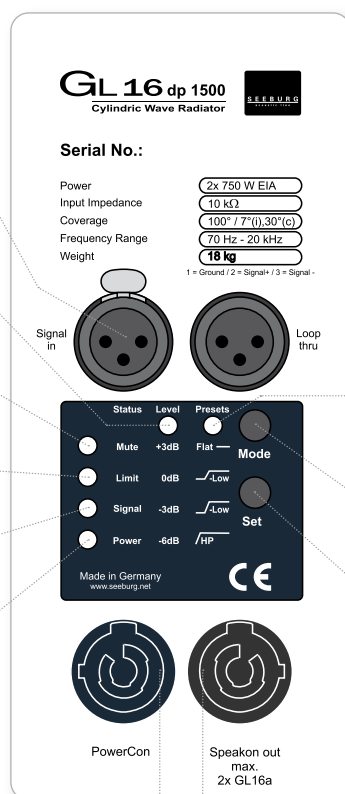
Yellow light when the limiter is restricting the level.

Signal LED

Green light when the input signal exceeds -20 dBu

Power LED

Green light when the system is switched on.



Presets

Flat

Standard setting with linear frequency response for stand-alone use.

Low

Slight reduction of low / mid range frequencies for combination with one GL 16 system.

Low

Strong reduction of low / mid range frequencies for combination with several GL 16 systems.

HP

120 Hz high pass filter for combination with subwoofers.

Mode - key

Changing to control modes Status / Level and Presets.

Set - key

Setting of various values and Mute on / off.

PowerCon (blue)

Power supply
195-250 VAC

Speakon NL4 out

For the connection with one GL 16a system.

(dp 1000-version:
PowerCon loop Thru)

Flying Cradle



for up to 6 units GL 16 or
for one unit GL 24,
incl. accessories
Order No. **01354**

Flying Bracket



GL 16
incl. accessories
(2 x M10 x 30 handle screws)
Order No. **01352/GL16/set**

Handle Screw



for flying brackets, adjustable
M10 x 30
Order No. **08375/30**

Flange



balanced, 2 x M10, 35 mm Ø,
for up to 2 x GL speakers and
flying bracket
Order No. **08126/bal**

Flange



M20 x 35 mm— for flying bracket
G3, GL 16, GL 24, K 24
Order No. **08127/nut**

Doughty Trigger Clamp



for flying brackets,
SWL 200 kg
Order No. **01222**

Safety Steel Rope



4 mm - 50 cm
Order No. **01376**

Chain fastener



VBS 7 mm
Order No. **01378**

Ring Screw



M10— DIN 580,
black zinced
Order No. **73700**

TV Spigot



10 mm internal thread,
28 mm Ø
Order No. **08128**

Wall Mount



for one single GL 16 / GL 24 /
A 2 / A 3 / L-Series
Order No. **03034**

Spacer



for Wall Mount (03034)
polyurea coated
Order No. **03034/spc**

Wall Mount



for U-brackets, 40 kg max., incl. screws
(M10 x 70 mm socket head screw,
M10 hex lock nut and flat washer)
for 15" speakers
Order No. **08130/F/400**



Spacer.

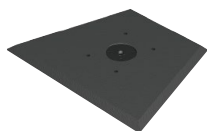
ACCESSORIES GL 16

Monopod



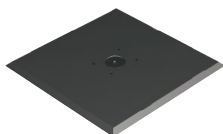
for GL 16,
height 110 cm
Order No. **01277**

Small Base Plate



for GL 16, M20,
61,5 x 48,0 cm
Order No. **01278/M20**

XL Base Plate



for stacked mounting of
multiple GL 16 units, M20,
80,0 x 80,0 cm
Order No. **01279/M20**

Connection Adapter



for Small and XL base plate
for stacking GL 16i -> base plate
Order No. **01276/GL16**

Connection Adapter



for GL 16c -> GL Sub, G Sub 1501
Order No. **01276**

Speaker Stand



Wind up for speaker enclosure,
50 kg max., height 129 to 204 cm
Order No. **03011**
50 kg max., K&M
Order No. **03010**

Stretchcover



for one unit GL 16,
other colors available on request
Order No. **01230/GL16**
for two units GL 16,
several colors on request
Order No. **01230/GL16/long**

Raincover Set



for GL 16, set incl.
low lid (by using flying bracket) and
high lid (by using flying cradle)
Order No. **01230/outdoor**

Bag



for one unit GL 16
Order No. **01230**

Flightcase



for 2 units GL 16 units,
inserts for accessories, stackable,
PVC coated, 100 mm blue wheels,
Order No. **16004/pro/T**

Hybrid Cable System



PowerCon-PowerCon / XLR-XLR
2,5 m Order No. **08462**
5 m Order No. **08464**
10 m Order No. **08466**
15 m Order No. **08468**



Raincover.